

**Waste Isolation Pilot Plant**  
**Compliance Certification Application**

**Reference 348**

Kato, C. Sato, T., Smorawinska, M., and Horikoshi, K. 1994.  
"High Pressure Conditions Simulate Expression of Chloramphenicol acetyltransferase  
Regulated by the Iac Promoter in Escherichia coli," FEMS Microbiology Letters.  
Vol. 122, nos. 1-2, 91-96.

- ppvD* from *Lactococcus lactis*. Biosci. Biotech. Biochem. 57, 88–92.
- 14 Moran, C.P., Lang, N., LeGrice, S.F.J., Lee, G., Stephens, M., Sonenshein, A.L., Pero, J. and Losick, R. (1982) Nucleotide sequences that signal the initiation of transcription and translation in *Bacillus subtilis*. Mol. Gen. Genet. 186, 339–346.
- 5 Harley, C.B. and Reynolds, R.P. (1987) Analysis of *E. coli* promoter sequences. Nucleic Acids Res. 15, 2343–2361.
- 6 Cutting, S., Roels, S. and Losick, R. (1991) Sporulation operon *spoIVF* and the characterisation of mutations that uncouple Mother-cell from forespore gene expression in *Bacillus subtilis*. J. Mol. Biol. 221, 1237–1256.
- 7 Meijer, M., Beck, E., Hansen, F.G., Bergmans, H.E.N., Messer, W., Meyenburg, K. and Schaller, H. (1979) Nucleotide sequence of the origin of replication of the *Escherichia coli* K-12 chromosome. Proc. Natl. Acad. Sci. USA 76, 580–584.
- 8 LeBlanc, D.J., Lee, L.N. and Abu-Al-Jaibat, A. (1992) Molecular, genetic and functional analysis of the basic replicon of pVA380-1, a plasmid of oral streptococcal origin. Plasmid 28, 130–145.

FEMS E 06156

## High pressure conditions stimulate expression of chloramphenicol acetyltransferase regulated by the *lac* promoter in *Escherichia coli*

Chiaki Kato \*, Takako Sato, Maria Smorawinska and Koki Horikoshi

The Deep Star Group, Japan Marine Science and Technology Center, 2-15 Natsushima-cho, Yokosuka, 237, Japan

(Received 21 June 1994; accepted 8 July 1994)

**Abstract:** Recombinant plasmids with the chloramphenicol acetyltransferase (CAT) structural gene behind several kinds of promoters were tested for expression in *Escherichia coli* during growth at atmospheric pressure (0.1 MPa) and at high pressure (30 MPa). Expression of the CAT gene from the *lac* promoter was remarkably activated (approx. 78-fold) by high pressure in the absence of the inducer isopropyl- $\beta$ -D-thiogalactopyranoside (IPTG). The stimulation of the CAT activity by the *lac* promoter at high pressure did not simply result from an increased plasmid copy number, because the CAT activities from the other promoters and  $\beta$ -lactamase activities were unaffected at high pressure.

**Key words:** *Escherichia coli*; *lac* Promoter; High pressure; Chloramphenicol acetyltransferase; Gene expression

### Introduction

Regulation of gene expression has been studied for many years, yet few studies have been published showing regulation by pressure. Welch et al. [1] reported that several heat shock proteins in *Escherichia coli* were induced at high pressure, and these authors suggested that temperature-regulated genes in *E. coli* may also be controlled by pressure. Barophilic bacteria isolated from the

deep-sea also showed gene expression regulated by high pressure [2–4].

We are investigating the molecular mechanisms of gene regulation in microorganisms isolated from deep-sea samples to determine how they have become adapted to high hydrostatic pressure conditions. In this study, as a simple model to examine these mechanisms, we have tested the relationship between gene expression and pressure conditions using the *E. coli* system.

In this paper, the chloramphenicol acetyltransferase (CAT) gene was used as a reporter gene in *E. coli*, and the relationship between gene expression and high pressure condition was

\* Corresponding author. Tel: +81 468 663011; Fax: +81 468 666364; E-mail: KATOC@MSTKID.JAMSTEC.GO.JP

examined using various promoters to express the CAT gene.

**Materials and Methods**

*Bacterial strains and plasmids*

*E. coli* JM109 (*recA1 supE44 endA1 hsdR17 gyrA96 relA1 thi Δ(lac-proAB) F'[traD36*

*proAB<sup>+</sup> lacI<sup>q</sup>lacZΔM15*) was used as host for the plasmids [5]. The plasmids pCM4 and pCM9 (Pharmacia Co.) were used as the source of the promoterless CAT structural gene [6]. The plasmids pBR322 containing the tetracycline (*tet*) promoter and the β-lactamase (*amp*) promoter [7], pUC13 containing the *lac* promoter [5], and pKK223-3 containing the *tac* promoter [8] were used to place the CAT gene downstream of the

respectively [9] and p...  
 expres...  
 origi...  
 tively, we...  
 Construct...  
 Prepar...  
 DNA was...  
 brook et...  
 ing the C...  
 quences...  
 CAT car...  
 ges: wit...  
 and tille...  
 Gene Cl...  
 pBR322 c...  
 (blunt en...  
 pKK223-...  
 phosphorylated...  
 cartridges...  
 pTS2 cor...  
 CAT-cartr...  
 an...-pro...  
 (clockwise...  
 tively, pT...  
 cartridge...  
 amp-prom...  
 CAT-cartr...  
 lac-promo...  
 HindIII C...

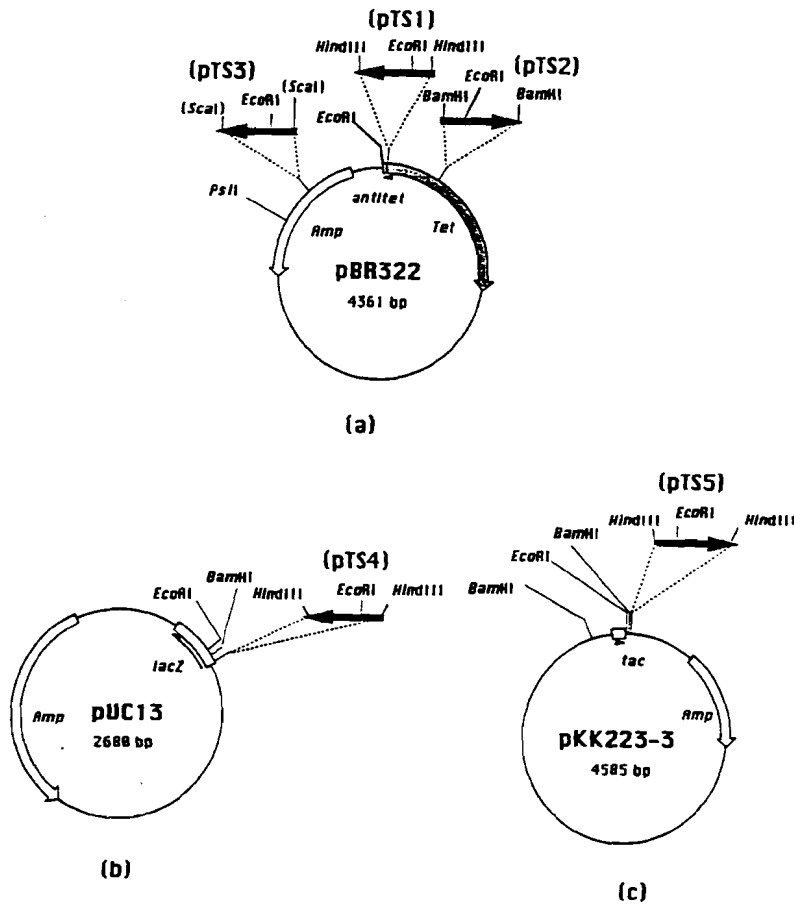


Fig. 1. A circular map of pBR322 (a), pUC13 (b), and pKK223-3 (c) showing the positions of various CAT cartridge (0.8 kb) inserts. The thin line represents the vectors and white and grey arrow boxes show ampicillin resistance gene (*Amp*) and tetracycline resistance gene (*Tet*), respectively, and their directions of transcription. The small white box and arrow heads represent the promoter regions of the vectors, and the black arrow box represents the CAT gene (CAT) cartridge.

Fig. 2. Growt...

*proAB<sup>+</sup> lacI<sup>q</sup>lacZΔM15*) was used as host for the plasmids [5]. The plasmids pCM4 and pCM7 (Pharmacia Co.) were used as the source of the promoterless CAT structural gene [6]. The plasmids pBR322 containing the tetracycline (*tet*) promoter and the  $\beta$ -lactamase (*amp*) promoter [7], pUC13 containing the *lac* promoter [5], and pKK223-3 containing the *tac* promoter [8] were used to place the CAT gene downstream of the

respective promoter. Also, the plasmids pBR329 [9] and pACYC184 [10] containing the CAT gene expressed by the anti-tetracycline (*anti<sup>r</sup>ter*) and origin CAT (*cat*) promoters from Tn9, respectively, were used.

#### Construction of the recombinant plasmids

Preparation of plasmid DNA and recombinant DNA work were performed as described by Sambrook et al. [11]. Recombinant plasmids containing the CAT gene downstream of promoter sequences were constructed as shown in Fig. 1. CAT cartridges were purified from pCM7 digested with *Hind*III, pCM4 digested with *Bam*HI, and filled-in *Hind*III CAT-cartridge by using Gene Clean Kit (Bio101, Co.). The plasmids pBR322 digested with *Hind*III, *Bam*HI, or *Sca*I (blunt end), pUC13 digested with *Hind*III, and pKK223-3 digested with *Hind*III were dephosphorylated and ligated with appropriate CAT cartridges. The recombinant plasmids, pTS1 and pTS2 constructed from pBR322 and *Hind*III CAT-cartridge (counterclockwise, downstream of *anti<sup>r</sup>ter*-promoter) and *Bam*HI CAT-cartridge (clockwise, downstream of *tet*-promoter), respectively, pTS3 from pBR322 and blunted CAT-cartridge (counterclockwise, downstream of *amp*-promoter), pTS4 from pUC13 and *Hind*III CAT-cartridge (counterclockwise, downstream of *lac*-promoter), and pTS5 from pKK223-3 and *Hind*III CAT-cartridge (clockwise, downstream of

*tac*-promoter) were obtained after selecting for chloramphenicol-resistant transformants in *E. coli* JM109.

#### Expression study of the CAT gene

*E. coli*, carrying the recombinant plasmid, was cultivated in LB medium with oxygen-saturated fruonert (25% volume of medium) and suitable antibiotic (ampicillin; 50  $\mu$ g ml<sup>-1</sup>, kanamycin; 50  $\mu$ g ml<sup>-1</sup>, tetracycline; 25  $\mu$ g ml<sup>-1</sup>, or chloramphenicol; 20  $\mu$ g ml<sup>-1</sup>) for 14 h at 37°C at atmospheric pressure (0.1 MPa) and at high pressure (30 MPa) using a pressure vessel (titanium; Rigisha Co., Tokyo). A 0.1% (v/v) inoculum of each overnight culture was transferred to fresh medium in polypropylene tubes (5 ml sterilized Kraio-tube) at 0°C, the tubes were sealed with parafilm and then cell incubation was started at 37°C immediately at each pressure. After cultivation, the cells were collected by centrifugation (8000 rpm for 15 min), washed with 1 M KCl, 0.1 M Tris · HCl, pH 7.8 buffer, suspended in 0.1 M Tris · HCl, pH 7.8 buffer, and sonicated at 0°C. Supernatants were prepared by centrifugation (14000 rpm for 5 min in 1.5 ml Eppendorf tubes).

#### Assay of protein concentration, CAT activity, and SDS-polyacrylamide gel electrophoresis

Protein concentration in crude extracts was determined using the Protein Assay Kit (Bio Rad, Co.) with bovine serum albumin (BSA) as the

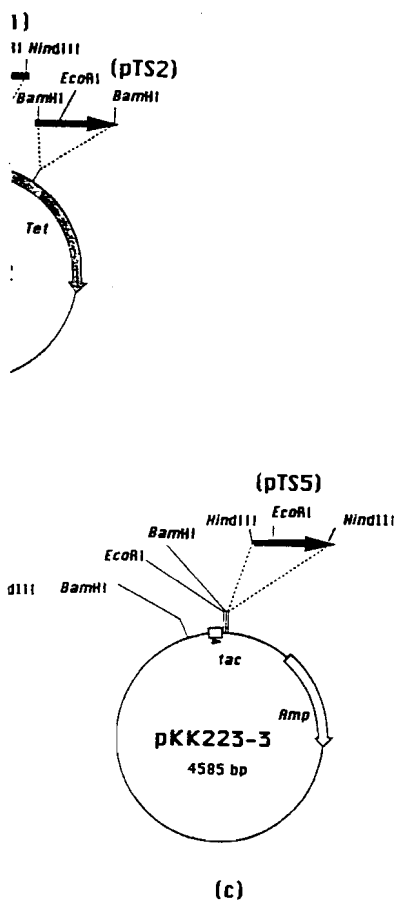


Figure 1 showing the positions of various CAT cartridge (0.8 kb) inserts. The boxes show ampicillin resistance gene (*Amp*) and tetracycline resistance gene (*Tet*). The small white box and arrow heads represent the CAT gene (*CAT*) cartridge.

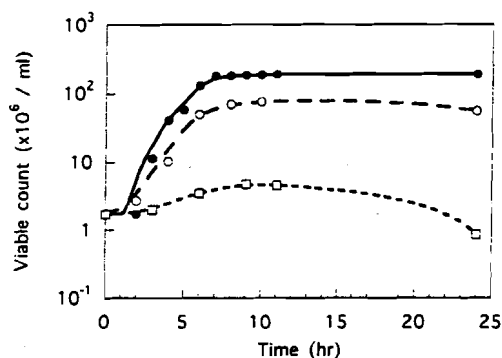


Fig. 2. Growth of strain JM109 in LB medium at several pressures. Viable cell counts were measured by determination of colony forming number. *E. coli* cells were grown at atmospheric pressure (●), 30 MPa (○), and 50 MPa (□).

protein standard. CAT activity was assayed by standard methods [12]. One unit of CAT activity was defined as 1 nmol 5,5'-dithiobis (2-nitrobenzoic acid) (DTNB) reduced per min at 37°C [13].  $\beta$ -Lactamase activity was assayed by the procedure of Sawai et al. [14]. SDS-PAGE was carried out by the method of Laemmli [15]. 12% Ready Gel (Bio Rad, Co.) and Low Molecular Weight (LMW) Calibration Kit (Pharmacia, Co.) were used as protein standard markers.

### Results and Discussion

#### Effect of pressure on growth of the host strain *E. coli* JM109

When the host strain *E. coli* JM109 was grown at atmospheric pressure and high pressure, almost no effect on growth was detected until 30 MPa pressure. No increase of cell numbers occurred at 50 MPa as shown in Fig. 2, although the optical density increased under this condition. The *E. coli* JM109 cells were able to divide under a pressure of 30 MPa with a doubling time of around 1.08 h, as compared with 0.86 h at atmospheric pressure (0.1 MPa). When *E. coli* cells were incubated at 50 MPa the increase in optical density at 660 nm was due to cell elongation, and not cell division [16]. Because 50 MPa caused severe inhibition of cell growth and was likely to change levels of gene expression as an indirect result of this pronounced effect, we decided to

Table 1

Comparison of CAT activity encoded by the plasmid pTS4 expressed in *E. coli* JM109 grown at 0.1 MPa and 30 MPa

Plasmid	Gene	Enzyme activity (U/mg)		Ratio <sup>a</sup>
		0.1 MPa	30 MPa	
pTS4 (- IPTG <sup>b</sup> )	<i>lac</i> -CAT	64.3	4992	77.6
	$\beta$ -lactamase	68.0	185	2.7
pTS4 (+ IPTG)	<i>lac</i> -CAT	6327	15474	2.4
	$\beta$ -lactamase	75.5	209	2.7

<sup>a</sup> Ratio shows the ratio of the specific enzyme activity (unit/mg of protein) at 30 MPa compared with 0.1 MPa.

<sup>b</sup> - IPTG: no IPTG added; + IPTG: 1 mM IPTG was added.

study expression the CAT gene at lesser pressures. The 30 MPa pressure condition was used for growth of the *E. coli* transformants.

When *E. coli* JM109 carrying plasmid was cultivated at high pressure, the copy number of the plasmid per cell showed a tendency to increase. The extent of increase with plasmids such as pBR322 or pUC vectors at 30 MPa was two-three-fold as detected by a simple plasmid preparation method [17]. The quantity of plasmid DNA increased almost directly in proportion to the specific activity of expressed  $\beta$ -lactamase encoded on the plasmid.

#### Effect of pressure on gene expression directed by the *lac*-promoter

The recombinant plasmid pTS4 carrying a CAT cartridge behind the *lac* promoter of vector pUC13 (Fig. 1b) was introduced into *E. coli* JM109. A transformant was cultivated at atmospheric pressure (0.1 MPa) and at 30 MPa, and CAT activity and  $\beta$ -lactamase activity were assayed. As shown in Table 1, CAT activity in cells grown at high pressure without IPTG was tremendously increased (about 78-fold) compared with the level expressed at atmospheric pressure, while  $\beta$ -lactamase activity increased only 2.7-fold at high pressure. The extent of increase in CAT activity was almost equal to that obtained by addition of IPTG which acts as a gratuitous inducer of the *lac*-promoter at atmospheric pressure.

The cell extracts from *E. coli* JM109 carrying pTS4 grown under these conditions were applied to a 12% SDS-polyacrylamide gel and subjected to electrophoresis. As shown in Fig. 3, a 25 kDa protein corresponding to the CAT protein was expressed very strongly at high pressure in the absence of IPTG (lane 2). A band of identical mobility appears at atmospheric pressure in the presence of IPTG (lane 3).

#### Expression of CAT activity encoded by other recombinant plasmids in *E. coli* grown at atmospheric pressure and high pressure

As shown in Table 2, the CAT activities encoded by other recombinant plasmids (Fig. 1a,c) and expressed from various promoters were mea-

Fig. 3. Gel electrophoresis of protein extracts from *E. coli* JM109 carrying the pTS4 plasmid without IPTG (lane 1) and with IPTG (lane 2).

Table 2  
Comparison of CAT activity encoded by various recombinant plasmids in *E. coli* JM109

Plasmid	Activity (U/mg)
pTS4	4992
pTS2	185
pTS3	185
pTS5 (-IPTG)	185
pTS5 (+IPTG)	15474
pBR322	209
PACYC184	209

study expression the CAT gene at lesser pressures. The 30 MPa pressure condition was used for growth of the *E. coli* transformants.

When *E. coli* JM109 carrying plasmid was cultivated at high pressure, the copy number of the plasmid per cell showed a tendency to increase. The extent of increase with plasmids such as pBR322 or pUC vectors at 30 MPa was two- to three-fold as detected by a simple plasmid preparation method [17]. The quantity of plasmid DNA increased almost directly in proportion to the specific activity of expressed  $\beta$ -lactamase encoded on the plasmid.

#### Effect of pressure on gene expression directed by the *lac*-promoter

The recombinant plasmid pTS4 carrying a CAT cartridge behind the *lac* promoter of vector pUC13 (Fig. 1b) was introduced into *E. coli* JM109. A transformant was cultivated at atmospheric pressure (0.1 MPa) and at 30 MPa, and CAT activity and  $\beta$ -lactamase activity were assayed. As shown in Table 1, CAT activity in cells grown at high pressure without IPTG was tremendously increased (about 78-fold) compared with the level expressed at atmospheric pressure, while  $\beta$ -lactamase activity increased only 2.7-fold at high pressure. The extent of increase in CAT activity was almost equal to that obtained by addition of IPTG which acts as a gratuitous inducer of the *lac*-promoter at atmospheric pressure.

The cell extracts from *E. coli* JM109 carrying pTS4 grown under these conditions were applied to a 12% SDS-polyacrylamide gel and subjected to electrophoresis. As shown in Fig. 3, a 25 kDa protein corresponding to the CAT protein was expressed very strongly at high pressure in the absence of IPTG (lane 2). A band of identical mobility appears at atmospheric pressure in the presence of IPTG (lane 3).

#### Expression of CAT activity encoded by other recombinant plasmids in *E. coli* grown at atmospheric pressure and high pressure

As shown in Table 2, the CAT activities encoded by other recombinant plasmids (Fig. 1a,c) and expressed from various promoters were mea-

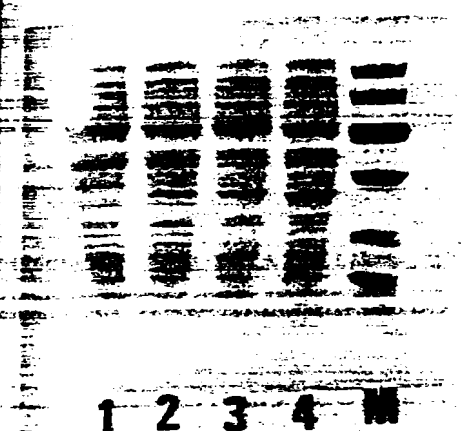


Fig. 3. Gel electrophoresis of bacterial proteins. Samples were electrophoresed on a 12% polyacrylamide gel with SDS. Lanes 1-4, proteins (15 mg) from the crude extract of *E. coli* JM109 carrying the plasmid pTS4 grown at 0.1 MPa without IPTG (lane 1) and with 1 mM IPTG (lane 2), and grown at 30 MPa without IPTG (lane 3) and with IPTG (lane 4). Lane M, LMW (phosphorylase b: 94 kDa, albumin: 67 kDa, ovalbumin: 43 kDa, carbonic anhydrase: 30 kDa, trypsin inhibitor: 20.1 kDa,  $\alpha$ -lactalbumin: 14.4 kDa).

Table 2

Comparison of CAT activity encoded by various plasmids in *E. coli* JM109 grown at 0.1 MPa and 30 MPa.

Plasmid	Gene	Enzyme activity (U/mg)		Ratio
		0.1 MPa	30 MPa	
pTS1	<i>antitet</i> -CAT	158	272	1.7
	$\beta$ -lactamase	14.4	26.0	1.8
pTS2	<i>tet</i> -CAT	201	512	2.5
	$\beta$ -lactamase	30.9	93.8	3.0
pTS3	<i>amp</i> -CAT	183	231	1.3
pTS5 (-IPTG)	<i>tac</i> -CAT	438	716	1.6
	$\beta$ -lactamase	9.9	14.4	1.5
pTS5 (+IPTG)	<i>tac</i> -CAT	4649	15094	3.2
	$\beta$ -lactamase	15.9	43.0	2.7
pBR322	<i>antitet</i> -CAT	645	1481	2.3
	$\beta$ -lactamase	8.3	21.6	2.6
pACYC184	Tn9-CAT	8576	11564	1.3

sured in *E. coli* JM109 grown at 0.1 MPa and 30 MPa. The increase in activity of  $\beta$ -lactamase encoded on the plasmid was shown to be around 1.5-3.0 at high pressure due to the increased plasmid copy number in *E. coli* at high pressure. CAT activities from *E. coli* carrying the plasmids pTS1, pTS2, pTS5 in the presence and absence of IPTG, and control plasmids pBR322 showed almost the same level of increase at high pressure as  $\beta$ -lactamase activities. CAT activities from the plasmid pTS3 and another control plasmid pACYC184 also showed no substantial effects resulting from the change in pressure. These results show that gene expression directed by the promoters encoded on the vector pBR322, and *tac* promoter encoded on the expression vector pKK223-3 is not affected at increased pressure, until a condition of 30 MPa is reached.

Our present study clearly shows that pressure activates the *lac* promoter region, and gene expression controlled by this promoter region was induced by high pressure. This is the first evidence of an increase of gene expression directed by the *lac* promoter in *E. coli* at high pressure. More detailed studies of mechanisms responsible for increased gene expression under high pressure are now in progress.

#### Acknowledgements

We thank Prof. W.D. Grant and Dr. W. Belamy for reading the manuscript and for many useful discussions.

#### References

- Welch, T.J., Farewell, A., Neidhardt, F.C. and Bartlett, D.H. (1993) Stress response of *Escherichia coli* to elevated hydrostatic pressure. *J. Bacteriol.* 175, 7170-7177.
- Bartlett, D., Wright, M., Yayanos, A.A. and Silverman, M. (1989) Isolation of a gene regulated by hydrostatic pressure in a deep-sea bacterium. *Nature* 342, 572-574.
- Bartlett, D.H., Chi, E. and Wright, M.E. (1993) Sequence of the *ompH* gene from the deep-sea bacterium *Photobacterium* SS9. *Gene* 131, 125-128.
- Chi, E. and Bartlett, D.H. (1993) Use of a reporter gene to follow high pressure signal transduction in the deep-sea bacterium *Photobacterium* sp. strain SS9. *J. Bacteriol.* 175, 7533-7540.

- 5 Yanisch-Perron, C., Vieira, J. and Messing, J. (1985) Improved M13 phage cloning vectors and host strains: nucleotide sequences of the M13 mp18 and pUC19 vectors. *Gene* 33, 103-119.
- 6 Close, T.J. and Rodriguez, R.L. (1982) Construction and characterization of the chloramphenicol-resistance gene cartridge: A new approach to the transcriptional mapping of extrachromosomal elements. *Gene* 20, 305-316.
- 7 Bolivar, F., Rodriguez, R.L., Greene, P.J., Betlach, M.C., Heyneker, H.L. and Boyer, H.W. (1977) Construction and characterization of new cloning vehicles. II. A multipurpose cloning system. *Gene* 2, 95-113.
- 8 Brosius, J. and Holy, A. (1984) Regulation of ribosomal RNA promoters with a synthetic *lac* operator. *Proc. Natl. Acad. Sci. USA* 81, 6929-6933.
- 9 Covarrubias, L. and Bolivar, F. (1982) Construction and characterization of new cloning vehicles. VI. Plasmid pBR329, a new derivative of pBR328 lacking the 482-base-pair inverted duplication. *Gene* 17, 79-89.
- 10 Chang, A.C.Y. and Cohen, S.N. (1978) Construction and characterization of amplifiable multicopy DNA cloning vehicles derived from the p15A cryptic miniplasmid. *J. Bacteriol.* 134, 1141-1156.
- 11 Sambrook, J., Fritsch, E.F. and Maniatis, T. (1989) *Molecular Cloning: a Laboratory Manual*. Cold Spring Harbor Laboratory Press, New York.
- 12 Show, W.V. (1975) Chloramphenicol acetyltransferase from chloramphenicol-resistant bacteria. In: *Methods in Enzymology*, (Colowick, S.P. and Kaplan, N.O., Eds.), Vol. 40, pp. 737-755. Academic Press, New York.
- 13 Kudo, T., Yoshitake, J., Kato, C., Usami, R. and Horikawa, K. (1985) Cloning of a developmentally regulated element from alkaliphilic *Bacillus subtilis* DNA. *J. Bacteriol.* 158, 158-163.
- 14 Sawai, T., Takahashi, I. and Yamagishi, S. (1978) Iodometric assay method for beta-lactamase with various beta-lactam antibiotics as substrates. *Antimicrob. Agents Chemother.* 13, 910-913.
- 15 Laemmli, U.K. (1970) Cleavage of structural proteins during the assembly of the head of bacteriophage T4. *Nature* 227, 680-685.
- 16 Zobel, C.E. and Cobet, A.B. (1963) Filament formation of *Escherichia coli* at increased hydrostatic pressures. *J. Bacteriol.* 87, 710-719.
- 17 Holmes, D.S. and Quigley, M. (1981) A rapid boiling method for the preparation of bacterial plasmids. *Anal. Biochem.* 114, 193-197.

MEMS  
1991

MEMSL

Var  
of l  
in

Kathy

Departm

(Receive

Abstract:

137670  
Jetc.  
core  
exhibited  
the great  
sobria 37c

Key words:

Introdu

pathoge  
severe b  
vent res  
tors of  
tures as  
cate pili  
ate adh  
intestina  
mec n.

\* Corresp  
2912.

SSDI 037